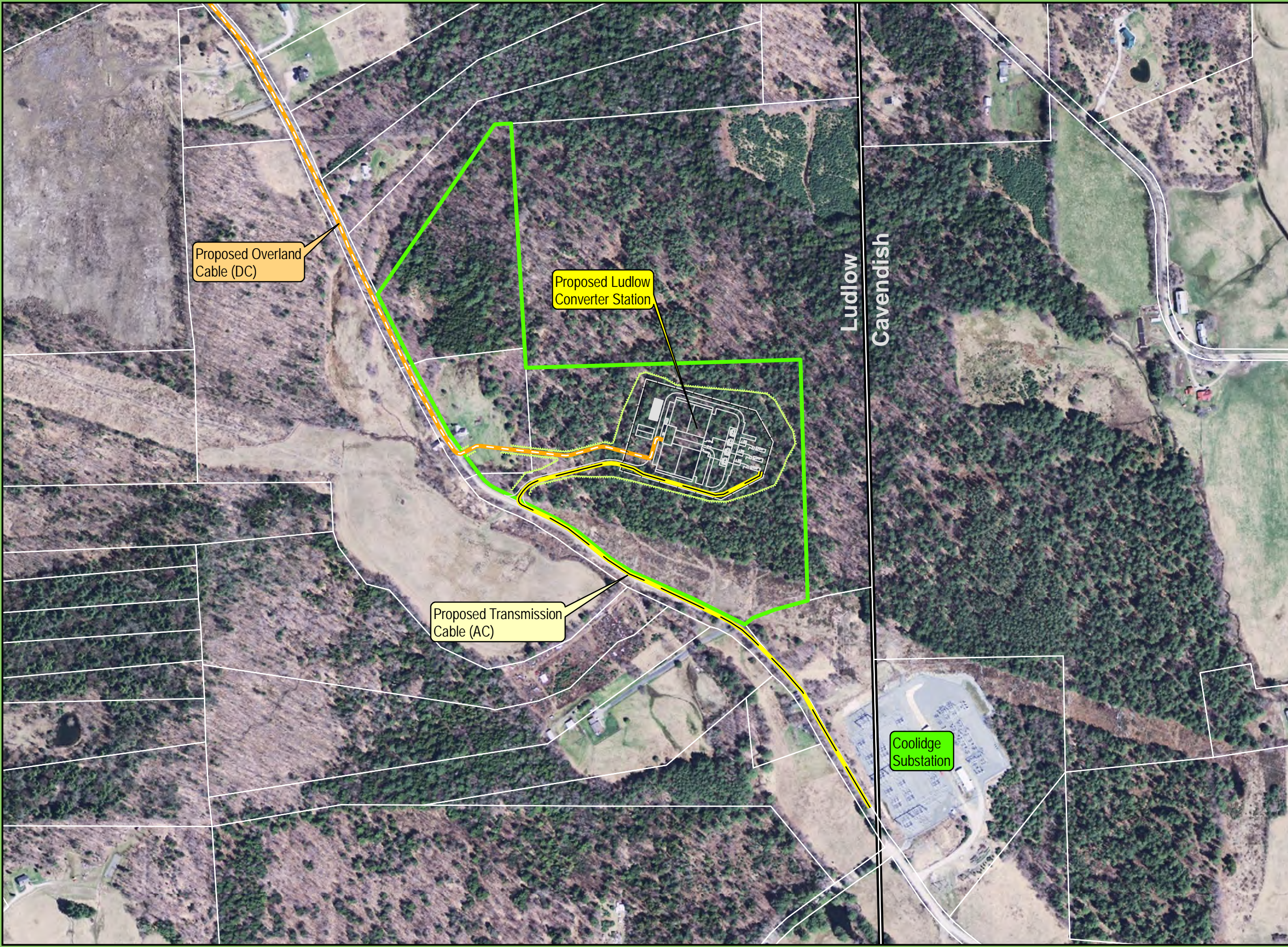


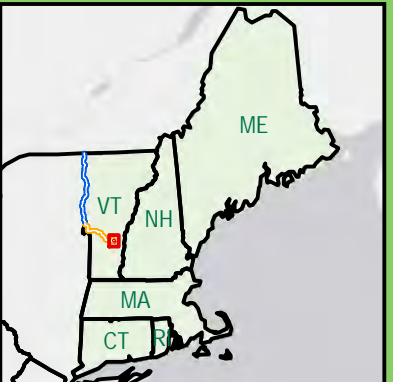
Appendix 6.1.TDI-NE.5

NECPL - Converter Station Plans

V:\PROJECTS\AUGUST\TIDINE_Clean_Power\248 Converter Station Context Map.mxd



Docket No. _____
Exh. TDI-JMB-8a



Legend

- Proposed Overland Cable (DC)
- Proposed Transmission Cable (AC)
- Proposed Fence
- Proposed Treeline
- Properties Controlled by TDI NE
- Approximate Parcel Boundary
- Township Boundary

Sources: ESRI, TRC, HDR, VHB, TDI New England, VCGI

0 250 500
Feet

TDI New England
A Blackstone Portfolio Company

New England Clean Power Link

Converter Station Context Map

Created: 11/25/2014

TRC 14 Gabriel Drive
Augusta, ME 04330



40 IDX Dr
Building 100 Suite 200
South Burlington, VT 05403
802.497.6100

Notes

All existing site data shown is approximate for conceptual purposes only and is unverified. Existing conditions and site layout by TRC, grading and wetlands by VHB.

Legend

Existing	Proposed

NE Clean Power Link
Converter Station

Nelson Road
Ludlow, Vermont

No.	Revision	Date	Appr'd
1	Added Color	08/19/2015	MK
Designed by	MK	Checked by	KR
Issued for		Date	March 3, 2015

Not Approved for Construction

Site Plan

Drawing Number

C-1

Sheet 1 of 3

Project Number
57666.00

Properties Controlled by TDI-NE

Converter Station

Stormwater Pond

VERMONT ELECTRIC POWER COMPANY, INC.
POLE LINE EASEMENT

Nelson Road

AC Circuit

DC Circuit

Access Road

Fence

AC Circuit

DC Circuit

Fence

Fence

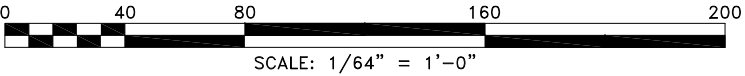
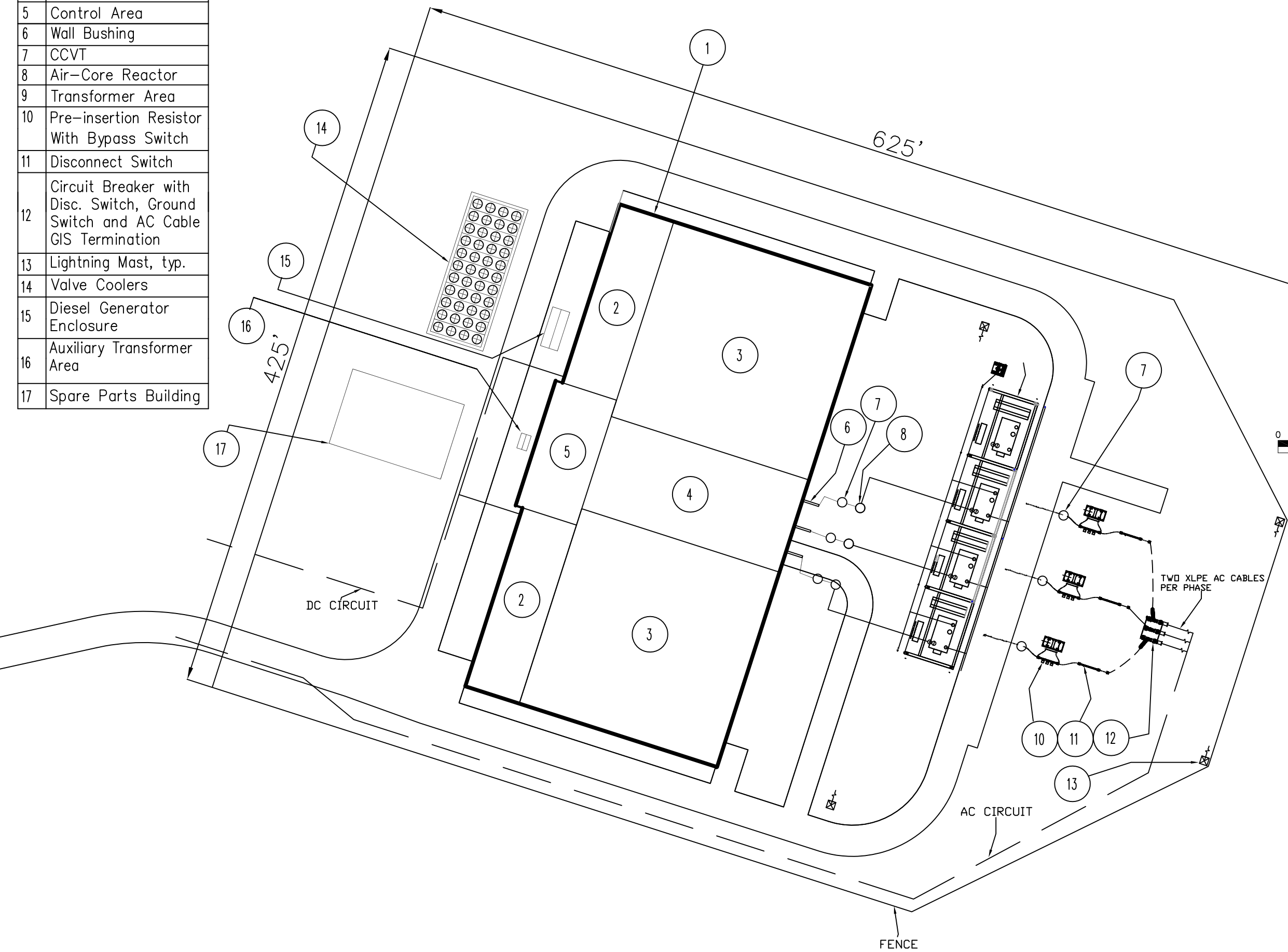


0 30 60 120 Feet

1	Converter Structure
2	DC Area
3	Valve Area
4	Reactor Area
5	Control Area
6	Wall Bushing
7	CCVT
8	Air-Core Reactor
9	Transformer Area
10	Pre-insertion Resistor With Bypass Switch
11	Disconnect Switch
12	Circuit Breaker with Disc. Switch, Ground Switch and AC Cable GIS Termination
13	Lightning Mast, typ.
14	Valve Coolers
15	Diesel Generator Enclosure
16	Auxiliary Transformer Area
17	Spare Parts Building

Docket No. _____

Exh. TDI-JMB-8c



Designed	TRC
Drawn	TRC
Checked	-
Approved	-
Scale	AS NOTED

No.	Revision	Date	By	Ck	PE	PE #
A	xxx	11/01/14	TRC	xxx		



New England Clean Power Link
TDI New England

Converter Station Elevations

Prepared by:

11/26/14

New England Clean Power Link Project
Equipment Description for Ludlow Converter Station
(December 2014)

A high-voltage direct current (HVDC) transmission system consists of converters, one at each end of the system, and HVDC transmission cables connecting the converters. The converters are named as such as they convert high voltage alternating current (HVAC) power into HVDC power and vice versa. HVAC is the prime method used in Vermont, and North America, to transport power to consumers. The New England Clean Power Link (NECPL) proposes to have a converter station in Ludlow Vermont. The Ludlow converter site will occupy approximately 4.5-acres, with a total cleared area of 10 +/- acres required for site grading, laydown areas, construction trailers and setbacks.

The latest innovation in HVDC technology is the voltage-source converter (VSC) which is the technology chosen for the NECPL. This technology was chosen for its superior operating characteristics and its reduced physical size.

A general description of the major equipment that is expected to be installed at the Ludlow Converter Station is provided below (numbers correspond to the accompanying diagram). Note that the detailed design of the Converter Station will occur after permit approval and selection of necessary contractors, and as such the equipment list and configuration is subject to change.

Converter Structure

1. **Converter Structure**

Approximately 165' width x 325' length x 52' high, this structure houses the necessary electrical equipment that converts DC to AC at the Ludlow Converter station. The Converter structure includes the DC Area, Valve Area, Reactor Area, and Control Area.

2. **DC Area**

The underground HVDC cables come into and are terminated in the DC Area. The DC area contains proprietary vendor-designed electrical equipment such as current transducers, disconnect switches, direct voltage dividers, capacitors, reactors, and arrestors.

3. **Valve Area**

The valve area connects to the DC area and reactor area and contains proprietary vendor-designed electrical equipment, such as insulated gate bipolar transistor (IGBT), valves and other electrical equipment used to convert DC power to AC power.

4. Reactor Area

The Reactor Area connects to the Valve Area and the AC Yard and contains proprietary vendor-designed electrical equipment such as reactors, arrestors, and current transformers.

5. Control Area

Electrical control and protection equipment, (cabinets, computers, etc.) are housed in the Control Area. All operations of the HVDC converter station are typically managed remotely so the station will be unmanned.

In addition to the equipment areas within the Converter Structure, the Converter Station site will contain the following equipment located in outdoor areas:

AC Yard

6. Wall Bushings

Overhead AC cables exit the Reactor Area through wall bushings into the AC Yard.

7. Capacitance-Coupled Voltage Transformer (CCVT)

CCTV is a transformer used in power systems to step down extra high voltage signals and provide a low voltage signal, for control, metering or operating a protective relay.

8. Air-Core Series Reactor

This reactor is series-connected to the transmission line or to the feeder to reduce/eliminate harmonic currents.

9. Transformer Area

The transformer area is located within the AC Yard and contains three single phase power transformers and one spare transformer. Single phase rating of each transformer is 350MVA 345kV/420kV.

10. Pre-Insertion Resistor

This resistor limit inrush currents that can occur during energization of the converter station and the DC cable circuit.

11. Disconnect Switch

Disconnect switches are used to isolate a circuit after the current has been interrupted by other means. It is used to ensure that an electrical circuit is completely de-energized for service or maintenance.

12. Circuit Breaker

The 345 kV AC breakers are used to energize the HVDC transmission system and to disconnect/trip the HVDC station. The breaker will be rated for the maximum fault current duty at the interconnection point (i.e., the existing Coolidge Substation).

13. Lightning Protection Masts

Lightning protection for the outside AC Yard area.

Other Equipment

14. Valve Coolers -- A cooling system is designed to dissipate the power losses generated in the converter valves through a closed loop pressurized nitrogen system. It consists of heat sinks in the converter valves, pumps, vessels, filters, measuring devices, outdoor coolers and interconnecting piping. The cooling liquid is deionized water, or a mixture of water and glycol, circulated by means of pumps. The cooling liquid is heated in the converter by the valve losses, and circulated to the coolers, where the heat is transferred to the ambient air.

15. Diesel Generator Enclosure -- The stand-by Diesel Generator system (DG) will be used to supply power to essential loads in case the primary auxiliary supply is unavailable. The diesel generator will be provided with a fuel tank capable of providing eight (8) hours of essential power required to maintain the Converter Station's system on standby for a Black Start condition.

16. Auxiliary Transformer Area -- The Auxiliary Transformer transforms auxiliary power supplied at medium voltage (e.g., 34.5 kV) to AC supply (600/345 V, 60 Hz) for the station's own auxiliary systems. The auxiliary power will be provided from two independent supplies. The primary supply is from delta connected tertiary windings on the main power transformer units. The back-up AC auxiliary power supply (34.5 kV) is provided from a nearby AC substation. A standby diesel generator set will be provided as a backup for supplying all essential loads.

17. Spare Parts Building -- located outside the Converter Building to house necessary spare parts.